



PDF
Complete

*Your complimentary
use period has ended.
Thank you for using
PDF Complete.*

[Click Here to upgrade to
Unlimited Pages and Expanded Features](#)

Plant Water Conservation: PI 416937





PDF
Complete

*Your complimentary
use period has ended.
Thank you for using
PDF Complete.*

[Click Here to upgrade to
Unlimited Pages and Expanded Features](#)

WILLIS Research Station





PDF
Complete

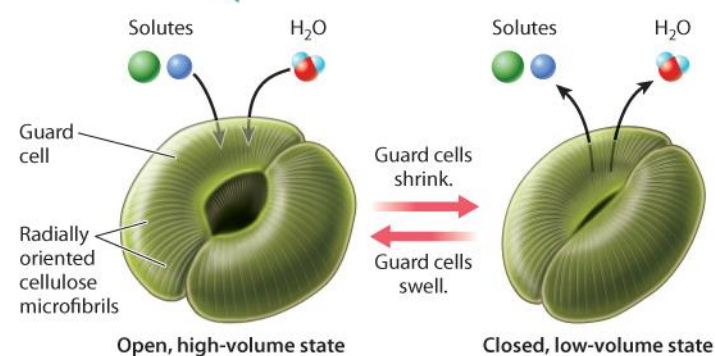
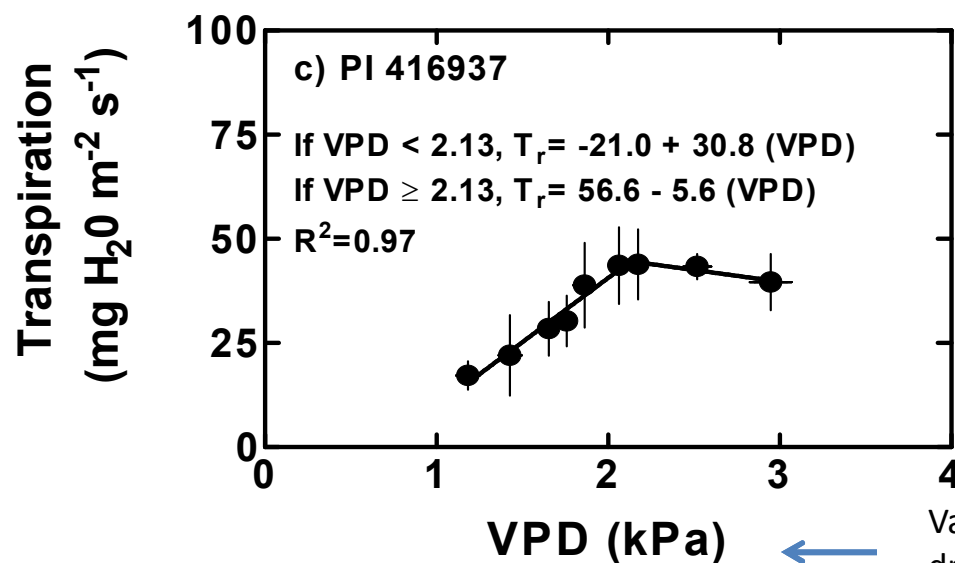
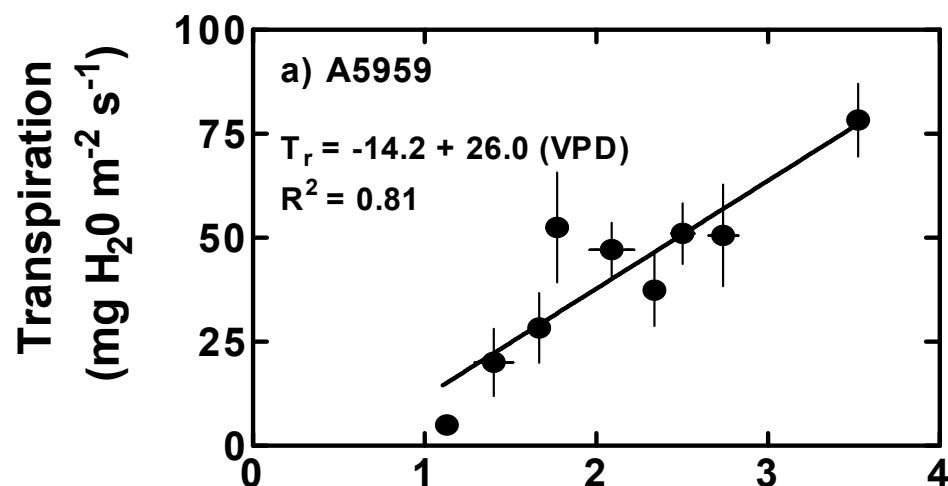
*Your complimentary
use period has ended.
Thank you for using
PDF Complete.*

[Click Here to upgrade to
Unlimited Pages and Expanded Features](#)

Tom Sinclair
USDA/U. Florida

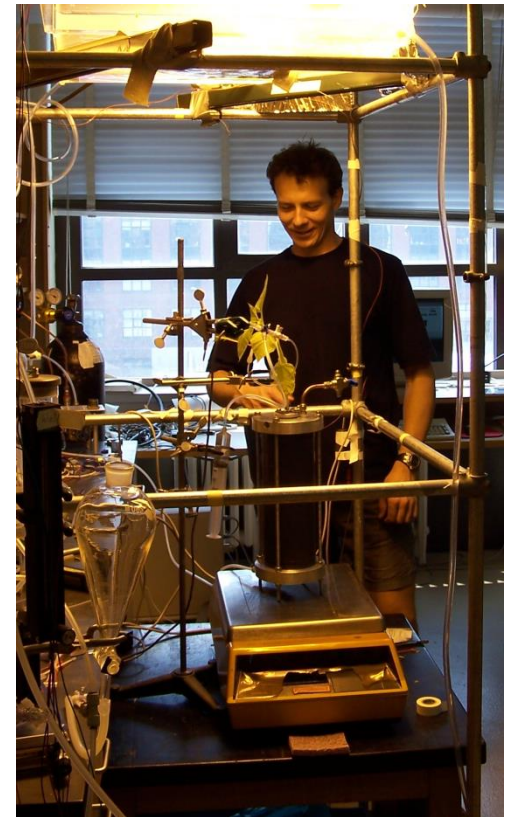
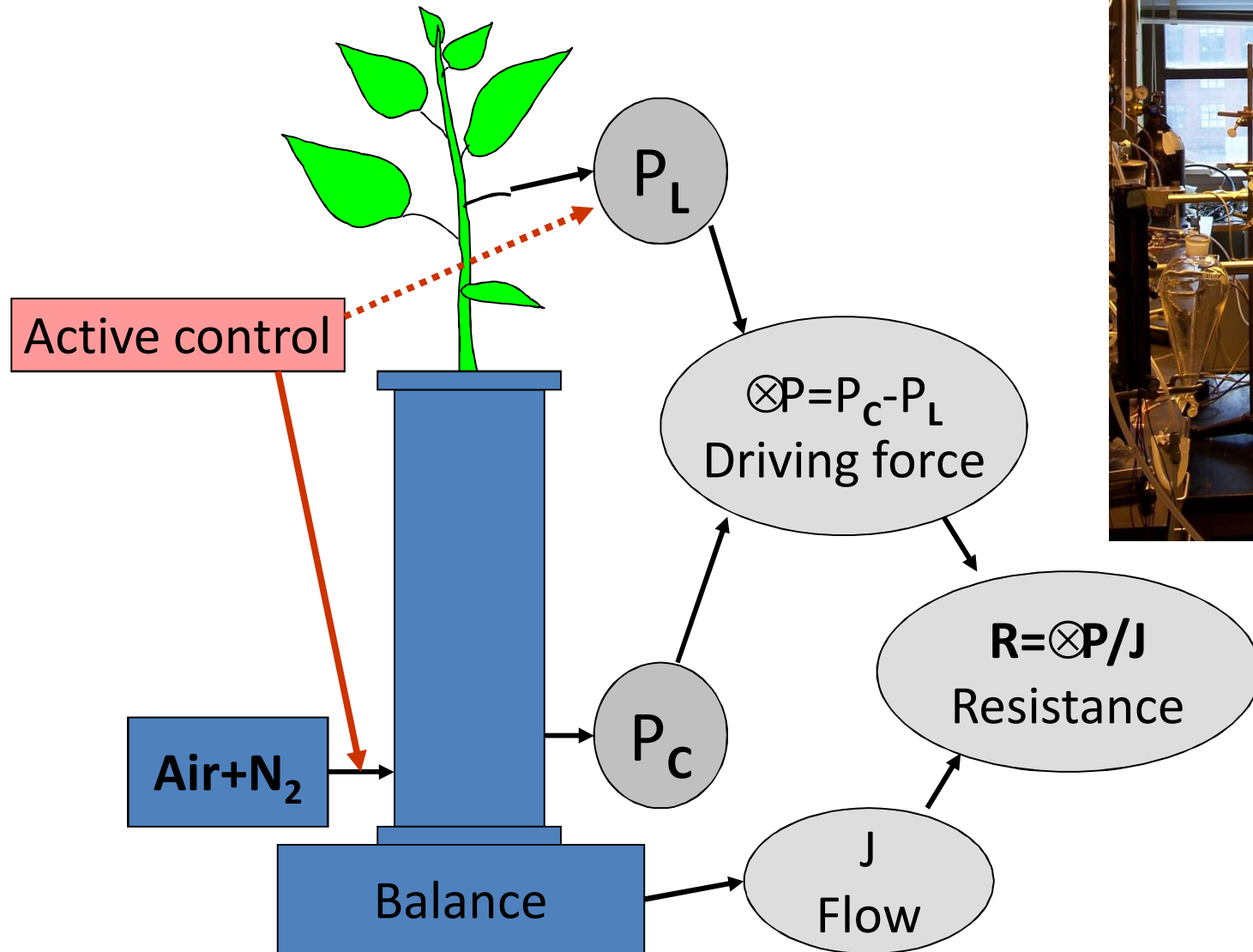
Tommy Carter
USDA/NCSU





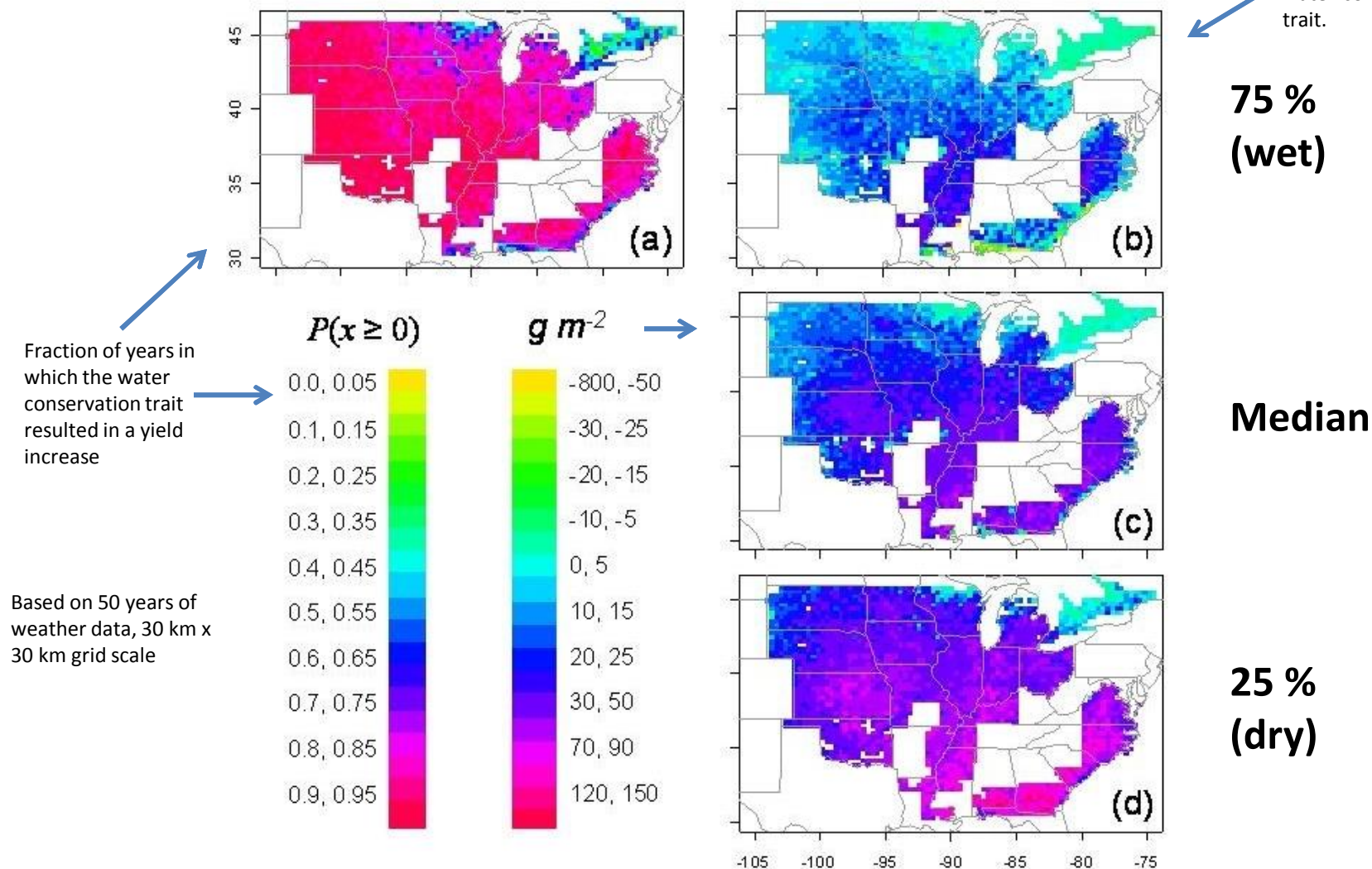
Vapor pressure difference between leaf and air =
 driving gradient for transpiration

ans to overcome
iration



Simulated Yield Response to Plant Water-Conservation Trait

Differences in yield between simulations with and without the water-conservation trait.



ed Distribution for Plant Water-Conservation Trait

Monsanto

Syngenta

Pioneer

Virginia Tech

Clemson Univ.

Kansas State Univ.

USDA, Jackson, TN

**Others obtained seed of tolerant parents
from other sources**



PDF
Complete

Your complimentary
use period has ended.
Thank you for using
PDF Complete.

[Click Here to upgrade to
Unlimited Pages and Expanded Features](#)

OF EVERY DROP.

TOUGH
from tassel to root

BETTER STAYGREEN
lengthens window of
opportunity for growth

Equipped with
STRONG AGRONOMICS
and the latest technology
packages

Uses
LESS WATER
per bushel

**ADVANCED
STOMATA CONTROL**
for more efficient use of water



AGGRESSIVE SILKING
for improved kernel set



DEEPER KERNELS
maintain yield under
late season stress



**EFFICIENT
ROOT SYSTEM**
captures deep soil moisture



67%
WIN RATIO
IN WATER-LIMITED
growing conditions



57%
WIN RATIO
IN NORMAL
growing conditions

6.9^{bu/A}

YIELD ADVANTAGE
in water-limited conditions

3.6^{bu/A}

YIELD ADVANTAGE
in normal growing conditions

DUPONT



PIONEER.

Optimum

AQUAmax

Delivers rain or shine.